



President's Message	P. 1
Engineers Creed	P. 2
November Meeting	P. 3
FES Membership Renewal	P. 4
Becoming a Leader	P. 5
Chapter Leadership	P. 6
FES State Calendar	P. 7
Job Advertisements	P. 8-11
Events	P. 12-13
2022/23 Donations	P. 14-15
Photos	P. 16

Upcoming Activities

November 2022

11/2 – Board Meeting

11/11 – K-12 Outreach

11/17 – Chapter Breakfast Meeting

President's Message

Greetings FES Palm Beach Chapter!

We have had an eventful and fun month of October as a chapter. We kicked off our month with our dinner meeting in which Andrew Uhler, Deputy Director of Program Development Palm Beach TPA, spoke about the mobility vision in Palm Beach County. It was likely one of our most engaging meetings, in which we saw the goals the Palm Beach TPA has set to make our community safe and advance with the growing population concerns. Thank you all for attending!

The Shrimp Boil also made an incredible come back this month. We had well over 80 attendees, 10+ volunteers, 5 sponsorships, and a lot of stomachs filled with delicious shrimp cooked by our very own Brett Fuller. A huge thank you to you all for attending and an even bigger thank you for going out of your way to invite your colleagues, your friends, and even reaching out to our local colleges and universities to make this event as fun as it was. We couldn't have gotten as far as we did without you all and without the help of our committee (Bonni Funt, Rick Joseph, Nick Clavelo, Tara Swann, Brett Fuller, and Lisa Tropepe), our volunteers, and our sponsors: Scalar Consulting Group Inc, Chen Moore & Associates, Tierra SF, Kimley-Horn, and Engenuity Group. We have one more event for you all before we close out this month. We are teaming up with ASCE and AWRA to hold a Fall Society Joint Mixer on October 27th at the Stormhouse Brewing Company. First 20 attendees will be receiving a free drink ticket!

In November, we are switching up our typical dinner meeting format and taking note of the upcoming holidays and time off that our members will be taking so we will be holding a **Breakfast** Meeting on November 17th at the Embassy Suites (West Palm Beach). We have Terrence Bailey, City Engineer, City of Riviera Beach and Dana Gillette, Principal Associate, Erdman Anthony slated to discuss sea-level rise resiliency in Palm Beach County with a presentation on the Singer Island road reconstruction: utilizing concrete roads on barrier islands. We hope to see you all there and do not forget to invite a colleague to join! Look out for the RSVP link in the next week. We also have a K-12 outreach event on Friday, November 11th at Rohi's Readery. We are looking for two volunteers to help guide the kids in a STEM activity we have prepared for this event. If you would like to volunteer please reach out to myself in the email below.

As this month comes to a close, and with Halloween right around the corner, remember to practice safe motorist tactics! Watch for children walking on roadways, enter and exit driveways and alleys carefully, and watch for the kids in costumes.

Hoping everyone has a great rest of the month,

Maria Missena, P.E.

FES Palm Beach Chapter President

mmissena@scalarinc.net

FES Mission Statement
FES supports engineering education, advocates licensure, promotes the ethical and competent practice of engineering, and enhances the image and well-being of all engineers in the state of Florida; and furthers the public's knowledge and understanding of the importance of the profession.

Engineer's Creed

As a professional engineer, I dedicate my professional knowledge and skill to the advancement and betterment of human welfare. I pledge: To give the utmost of performance; To participate in none but honest enterprise; To live and work according to the laws of man and the highest standards of professional conduct; To place service before profit, the honor and standing of the profession before personal advantage, and the public welfare above all other considerations. In humility and with need for Divine Guidance, I make this pledge.

M
E
M
B
E
R
S
H
I
P

Florida Engineering Society – Membership Committee – Seeking you!

FES is YOUR professional association. Your support and dedication are what helps us continue to build a stronger association. By renewing your membership, you will be a part of the team working to protect and celebrate the profession.

Renewing your membership is only the first step, we need your help to add membership as well. Do you encourage your young or new employees to be members? Help us explain how FES membership helps as the recognized and authoritative expert in licensure, ethics, and professional practice.

November Chapter meeting



Terrence Bailey (left picture), City Engineer, City of Riviera Beach, Dana Gillette (center picture), Principal Associate, Erdman Anthony, and Phoebe Cuevas-Molina (right picture) will be discussing sea-level rise resiliency in Palm Beach County with a presentation on the Singer Island road reconstruction: utilizing concrete roads on barrier islands.

Phoebe Cuevas Molina is a licensed Professional Engineer in Florida with over 17 years of experience in design, permitting, and construction phase services on municipal projects. She is a Project Manager at Erdman Anthony and manages projects for the City of Riviera Beach, South Florida Water Management District, and City of West Palm Beach. Phoebe is the current President of the ASCE Palm Beach Branch. She received her bachelor's and master's degrees in Civil Engineering from the University of Puerto Rico at Mayagüez and the University of Pittsburgh, respectively.

Dana Gillette is a Principal Associate with Erdman Anthony. A civil engineer and land surveyor with a degree from the University of Florida, Dana has been practicing in Florida and specializes in site civil, utility and transportation projects for both public sector and private clients. Dana serves as a Principal Associate at Erdman Anthony and leads the civil engineering efforts for the Florida operations for the firm.

Cash, check, and credit cards will be accepted at the door.

[REGISTER HERE!](#)

Deadline to register is Friday, November 11!



FES Membership Renewal



Thank you to all our members who have renewed! If you have not had the opportunity to do so, please take a moment and renew your membership *as soon as possible*.

Renew online

Florida MATHCOUNTS®

As the competition continues to grow, we need your help to sustain the success of this exciting and impactful event. At last year's state competition, 76 schools throughout Florida were represented by 244 Mathletes and 65 coaches. Only with the support of our members and member firms is Florida MATHCOUNTS® possible. These talented middle school students would miss this opportunity to shine without your help! **Make a Difference 2022-2023 Donations**

Inspiring the Future – FES Scholarship

Florida Engineering Society scholarships inspire and encourage the pursuit of an education focused on engineering. These scholarships are made possible by the generous tax-deductible contributions of Florida Engineering Society members, private companies, and the general public to the Florida Engineering Foundation, Inc.

Florida Engineering Foundation, Inc. contributions can be made online or by sending your tax-deductible check made payable to the Florida Engineering Foundation, Inc. to the following address:

Florida Engineering Foundation, Inc.
P.O. Box 750,
Tallahassee, FL 32302-0750

Become a Leader in Your Chapter

Strong committees are critical to the success of our organization and they offer you an opportunity for meaningful involvement in the betterment of your profession. If you have the desire to contribute to the Society by assuming a volunteer position, please read below for a list of the vacant committee positions. If you have any questions or are interested in volunteering then please contact Maria Missena, P.E. at mmissena@scalarinc.net.

At a minimum, committee members are required to be members of the Palm Beach Chapter, attend chapter meetings, provide updates to the membership (through the newsletter, chapter meetings, board meeting and website) and manage the budget (if the committee requires funds).

Chapter Committees

K-12 – **Vacant**

Legislative Affairs – **Vacant**

Chapter Webmaster – **Kate Saxon**

Community Service – **Marlon Ramirez**

Engineer It – **Rick Joseph, Jimmy Richie**

Membership Committee – **Giovanni Ortiz**

Scholarships – **Olive Bailey**

MATHCOUNTS -**Lexi Johnson**

Student Professional Development – **Vacant**

Shrimp Boil – **David Cowan**

Golf Tournament – **Raj Krishnasamy**

Leadership Advisory - **Rob Rennebaum**

PE Prep Course – **Kelly Ward, Tara Swann**

Planning & Preparedness – **David Cowan**

Chapter, Other -**Denise Palmatier/ Shannon LaRocque**

State Committees

Communications Advisory – **Vacant**

Professional Development – **Vacant**

Charter and Bylaws – **Vacant**

Florida Engineering Foundation – **Lisa Stone**

Membership Development – **Vacant**

Annual Conference Steering – **Karen Brandon**

Legislative and Government Relations – **Vacant**

Ethical Practices – **Angelina Fairchild**

Practice Section Liaison

Chapter members represent the Palm Beach Chapter of the Florida Engineering Society as a liaison to the following practice sections:

Education (FPPE) – **Vacant**

Consulting (FICE) – **Vacant**

Industry (FPEI) – **Vacant**

Government (FPEG) – **Vacant**

Community Liaison

Chapter members represent the Palm Beach Chapter of the Florida Engineering Society on the following Palm Beach County Boards:

FAU Advisory Council – **Vacant**

Environmental Control Hearing – **Toral Hertzberg**

Partnering – **Vacant**

Construction Industry Licensing Board – **Vacant**

Infrastructure Surtax Independent Citizen Oversight Committee – **Denise Palmatier**

Land Development Regulation Advisory – **Terrence Bailey**

School Board Engineering Academy Steering – **Vacant**

School Board Construction Oversight – **Vacant**

Groundwater and Natural Resources Protection – **Vacant**

Call for information: If you are serving on committee and do not see your committee or information here please let us know bertrand.king@kimley-horn.com

Chapter Leadership

- President: Maria Missena, P.E.
Scalar Consulting Group, Inc.
mmissena@scalarinc.net
- Vice President: Tara Swann, P.E.
Kimley-Horn
tara.swann@kimley-horn.com
- Treasurer: Rick Joseph, E.I.
Wantman Group
rick.joseph@wginc.com
- Secretary: Bert King, E.I.
Kimley-Horn
bertrand.king@kimley-horn.com
- State Director: David Cowan Jr., P.E.
Chen Moore
dcowan@chenmoore.com
- Past President: Nick Clavelo, P.E.
Kimley-Horn
Nick.clavelo@kimley-horn.com

BECOME A MEMBER TODAY

A membership with the Florida Engineering Society (FES) offers exceptional benefits ranging from the tangible (increased employee retention) to the intangible (development of Leadership and personal skills).

- NETWORKING OPPORTUNITIES
- CONTINUING EDUCATION
- LEADERSHIP OPPORTUNITIES
- INVOLVEMENT WITH LEGISLATION
- INCREASED JOB SATISFACTION

FOUNDED 1916

Florida Engineering Society




FES Calendar

Monday, November 7, 2022

FDOT Project Management Conference

11/7/2022 » 11/8/2022

Location: Orlando


 [Export to Your Calendar](#)



Wednesday, November 16, 2022

ACEC Florida FDOTConnect Virtual Training Lab: Roadway Design 2D Basics

11/16/2022 » 11/17/2022

 [Export to Your Calendar](#)  [Register](#)



FES and ACEC-FL Board Meetings

11/16/2022


Location: Tampa **Time:** 7:30 am - 5:00 pm

 [Export to Your Calendar](#)

ACEC Florida Region 4 Networking Event with ACEC Florida Board

11/16/2022

Location: Tampa **Time:** 5:00 pm - 6:30 pm

 [Export to Your Calendar](#)

FES as a COVID-19 Resource for Engineers

- During the COVID-19 crisis, you can find daily updates regarding Florida engineers, engineering related services, and much more on the FES/ACEC-FL homepage: www.FLENG.org.

Advertising opportunities

Looking to reach over 400 Engineers each month? Then place your ad in the FES Palm Beach Chapter newsletter. We are accepting new ads and renewals for the 2021-2022 Clipboard editions. Just \$150 for one year of advertising in the Clipboard. Please email your business card advertisements to tara.swann@kimley-horn.com. Checks should be made payable to Florida Engineering Society Palm Beach Chapter and should be mailed to Nick Clavelo, P.E., Chapter President at

1920 Wekiva Way, Suite 200, West Palm Beach, FL 33411



Palm Beach County Job Advertisement

ISSUED: 8-22-22

CLOSES: OPEN

Re-advertised

Position:

PROFESSIONAL ENGINEER

Salary:

\$81,533 Annually, negotiable depending on qualifications

Department:

Engineering and Public Works/Roadway Production

Location:

2300 N. Jog Road, WPB

Hours:

8:00 A.M. to 5:00 P.M., Monday - Friday

Plans, coordinates, reviews and approves the work of professional and technical staff in the Roadway Production Division. Conducts special engineering studies involving road alignment, roads and drainage, and design projects. Coordinates design field adjustments as needed during construction of Palm Beach County (PBC) roads, bridges, pathways and drainage improvements to reduce construction costs, eliminate or reduce construction conflicts. Prepares cost estimates for roadway design and for construction of roadways, bridges, pathways and drainage projects. Prepares reports and recommendations for the consideration of administrative superiors, boards, and committees. Provides professional guidance and direction to developers and consultants who seek advice or guidance for the proper development of their projects. Reviews Land Development permit applications for utilities and right-of-way. Reviews and approves construction shop drawings for non-standard construction items on PBC roads. Reviews and comments on or approves designs and construction plans done by Engineering Consultants for roads, bridges, pathways and drainage improvements in relation to Federal, State, County and project specific standards and criteria, and field conditions. Supervises professional and technical staff in the preparation of plan designs, cost estimates and specifications, traffic signal timing, sequences, geometric alignments and computations, and in the review of zoning petitions, site plans and various permit applications. Requires both independent professional judgment and decision-making of considerable difficulty.

The Palm Beach County Board of County Commissioners provides an excellent benefits package, including medical, dental and life insurance as well as vacation and sick leave, tuition reimbursement and participation in the Florida Retirement System.

QUALIFICATIONS:

Licensed as a Professional Engineer (P.E.) in the State of Florida OR a Bachelor's Degree in Civil Engineering; minimum of four (4) years of experience in professional engineering with emphasis on roadways and highways. Equivalency: Related Master's Degree and three (3) years of related experience.

Necessary Special Requirement: Licensed as a P.E. in the State of FL OR

ability to obtain State of FL P.E. licensure within 11 months of hire.

PREFERENCE FOR EXPERIENCE: As a P.E. in the State of FL working on roadways and highways; in structural and/or drainage design; working with local government agencies or Florida Department of Transportation (FDOT); working with FL Green Book, FDOT Standard Specifications for Road and Bridge Construction, FDOT Roadway and Traffic Design Standards, and/or American Association of State Highway and Transportation Officials (AASHTO) Green Book.

NOTE: It is not necessary to submit another application for this position if you applied 3/7/22 – 4/1/22 or 4/4-8/22.

Visit www.pbcgov.jobs for job description and to apply online. May upload any Veteran's Preference documentation to online application (No e-mail applications/resumes accepted). **Online Applications are accepted until filled. EO/AA M/F/D/V, Drug Free Work Place; All employees of Palm Beach County may be required to work before, during and/or after a natural or man-made disaster or hurricane.**



CAREER OPPORTUNITIES



Chen Moore and Associates, Inc. (CMA) has employment opportunities for civil engineering staff in our West Palm Beach office. Candidates should be able to efficiently plan and organize workload, demonstrate success working with a team of professionals, a commitment to quality, good communication skills, and a positive work ethic. The engineer(s) will work in the design team for a variety of infrastructure improvement projects.



NOW HIRING

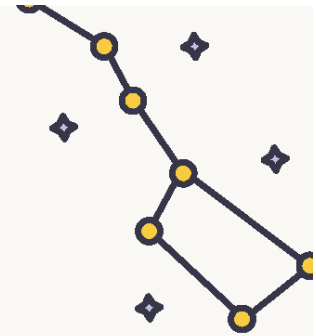
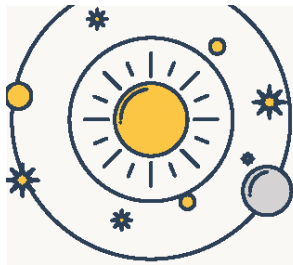
- Project Engineer
- Senior Civil Engineer/Project Manager

visit and apply at chenmoore.com/careers



OUR BENEFITS INCLUDE:

- Medical, Vision, Dental and Life Insurance
- 401(k) Plan with Competitive Employer Match
- Flexible Work Schedules
- Work-From-Home Flexibility
- Continuing Education
- Mentorship Program
- Professional Societies
- Community Engagement
- Cellular Phone



SPONSOR OPPORTUNITIES EF2D

ENGINEERING FAMILY FUN DAY
NOV 5, 2022
DREHER PARK- WPB

To Become an Event Sponsor, fill out the form and send check to:

ASCE Palm Beach Branch c/o Justin Tagle
300 S Australian Ave, Unit 429
West Palm Beach, FL 33401

Send company logo to swe.sefl@gmail.com

Company Name: _____

Contact Person: _____

Address: _____

Phone: _____

Email: _____

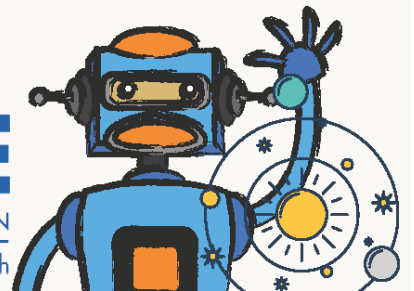
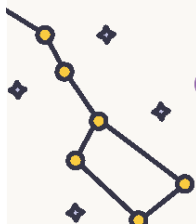
Sponsorship Level:

Bronze \$100

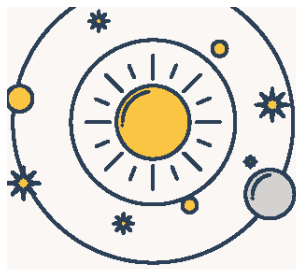
Silver \$250

Gold \$500

Platinum \$750



Contact Phoebe Cuevas Molina for more details (cuevas-molinap@erdmananthony.com)



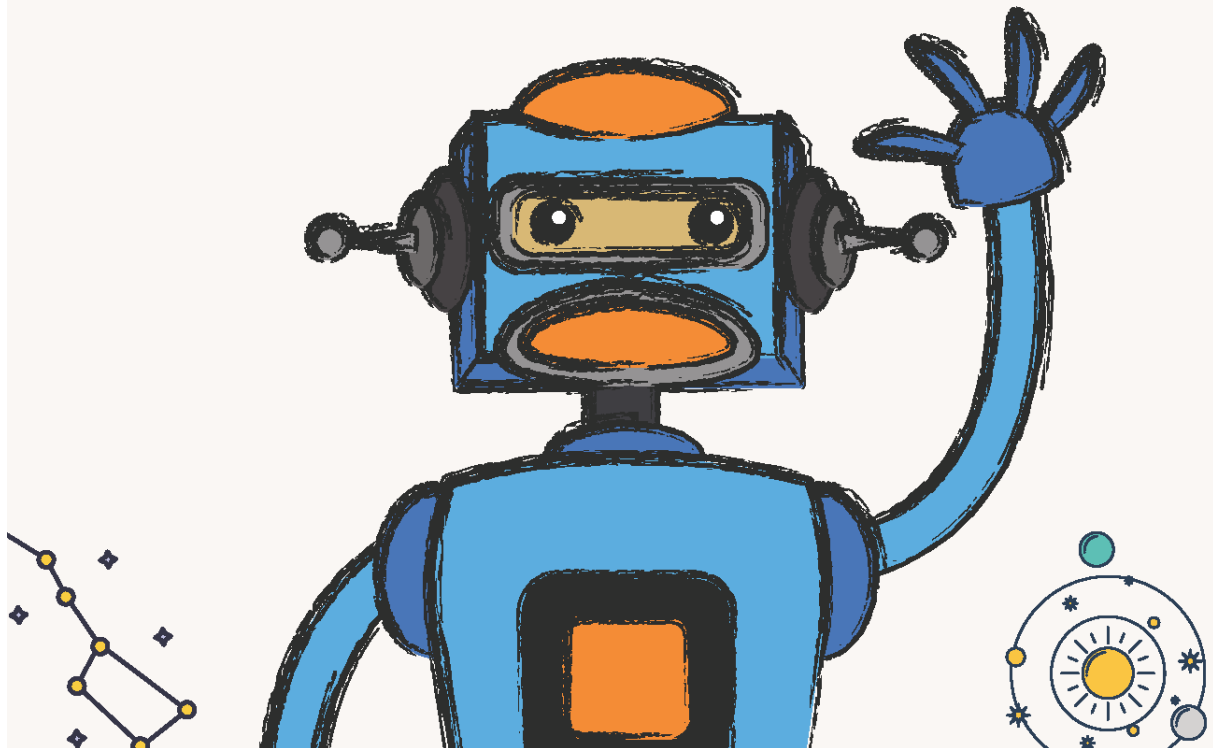
SAVE THE DATE

EF2D

ENGINEERING FAMILY FUN DAY

NOV 5, 2022

DREHER PARK- WPB



Contact Phoebe Cuevas Molina for more details (cuevas-molinap@erdmananthony.com)

The Palm Beach Chapter will publish wanted notices for Palm Beach Chapter members at no costs. We will also publish Help Wanted notices for local industry at a normal cost of \$25 per 75-word advertisement (This offer does not apply to employment agencies working for a fee).

All entries will be subjected to editing and identities of individuals will be protected if requested. Please email your advertisements to Bert King, E.I. at bertrand.king@kimley-horn.com by the 20th of the month. The posting will appear in the newsletter for the following month.

Checks should be made payable to Florida Engineering Society Palm Beach Chapter and should be mailed to Maria Missena, P.E. Chapter President at 5713 Corporate Way, Suite 200, West Palm Beach, FL 33407



2022-2023 SPONSORS



FES PB Chapter is now looking for sponsors for the 2022-23 calendar year. Please contact (rick.joseph@wginc.com) if interested

JR Benton Founders Level (\$1000 to \$500)

Scalar Consulting Group
Chen Moore and Associates

Gold Level (\$500 to \$250)

Silver Level (Up to \$250)

Engenuity Group

Kimley-Horn

Tierra South Florida

Shrimp Boil 2022!

